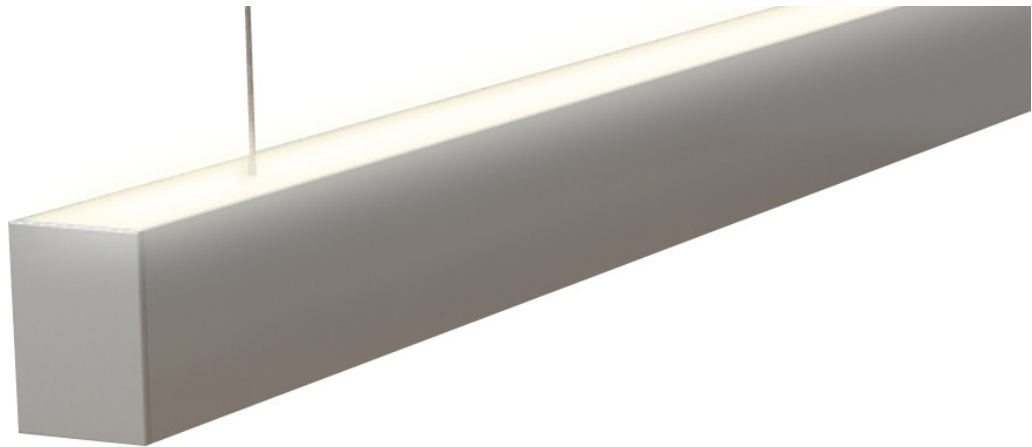


36 JOIST - H3550

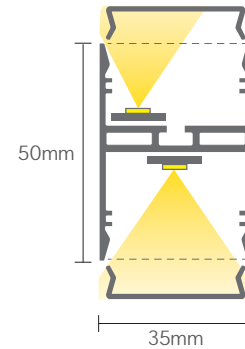


Key Features

- Easy installation
- Max module lengths are 2.9m
- Butt joins to create longer lengths
- 2m adjustable wire suspensions when suspending the luminaire
- 45 & 90 bends available (custom bends available upon request)
- Aluminium screwless end caps

Dimensions

Profile



Colour Options



Technical Information

HYPERFLEX		X FLEX				CHROMAFLEX			COLOURFLEX		WHITEFLEX	
2700K / 3000K / 4000K		2700K / 3000K / 4000K				RGBW(3000K) / RGBW(4000K) / RGBW(6000K)			RGB / Red / Green / Blue / Yellow		2500K-6000K	
CRI>80		CRI>90				CRI>80					CRI>80	
IP20/IP67	IP20	IP20 / IP67				IP20 / IP67			IP20 / IP67		IP20 / IP67	IP20
11.5W/m (11)	25W/m (25)	4W/m (4)	8W/m (8)	12W/m (12)	16W/m (16)	19.2W/m (19)	23W/m (23)	30W/m (30)	14.4W/m (14)	19.2W/m (20)	38.4W/m (39)	
2300lm/m	5000lm/m	520lm/m	1040lm/m	1560lm/m	2080lm/m	-	-	-	350-410 (RGB)	1680lm/m	3360lm/m	
Heatsink required for installation		No heatsink required for installation				Heatsink required for installation			Heatsink required for installation		Heatsink required for installation	

Lumens are based off 4000K values ##See individual LED Flex data sheet for full break down

Code

Example:

H3550 - P0490270DD079 - 2400

Code	Mounting		Power		CRI		CCT		Optics		Driver		Finish		Length
H3550	P	Wire Pendant	11	11.5W/m	80	CRI>80	27	2700K	OD	LED+	DO	Non-Dim	79	Anodised	- XXXX
OR			25	25W/m	90	CRI>90	30	3000K			DA	DALI	CU	Custom	
			04	4W/m			40	4000K			SW	Switch-Dim			
			08	8W/m			TW	2700K-6000K			CA	Casambi			
H3550IP			12	12W/m			RGB	RGB			T2	Tunable White			
			16	16W/m			RGBW3	RGBW (3000K)							
			19	19.2W/m			RGBW4	RGBW (4000K)							
			23	23W/m			RGBW6	RGBW (6000K)							
			30	30W/m											
			14	14.4W/m											
			20	19.2W/m											
			39	38.4W/m											

HAWKO Lighting reserve the right to change any data without notification