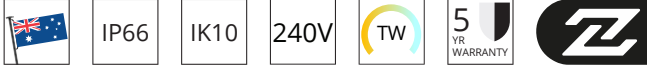


# HAWKO EXTREME (HX)

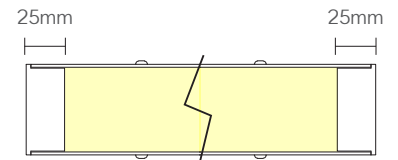
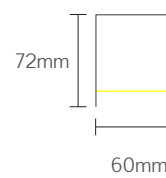


## Key Features

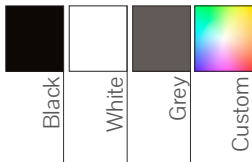
- Complies with relevant Australian Standards
- Even light distribution
- Provided shop drawings
- Plug and play
- Australian manufactured
- Max Length = 3.5m
- IK Rating only on Diffused option

## Dimensions

### Profile



## Colour Options



## Mounting

Surface Mounted (S) Wire Pendant (P) Wall Mounted (W)  
Rod Pendant (D)



## Code

Example: HX - S129030ODD010 - 2400

Code	Mounting	Power <sup>##</sup>	CRI	CCT	Optics	Driver	Finish	Length
HX	S Surface Mounted	12 12 W/m 1224 lm/m	80 CRI>80	30 3000K	OD Opal	DO Non-Dim	10 Black	- XXXX
	P Wire Pendant	16 16 W/m 1632 lm/m	90 CRI>90	27 2700K	L1 110° <sup>###</sup>	DA DALI	11 White	
	D Rod Pendant	19 19 W/m 1938 lm/m		35 3500K	L9 90° <sup>###</sup>	SW Switch-Dim	75 Grey	
	W Wall Mounted	26 26 W/m 2652 lm/m		40 4000K	L6 60° <sup>###</sup>	CA Casambi	CU Custom <sup>###</sup>	
		35 35 W/m 3570 lm/m		50 5000K	L3 30° <sup>###</sup>	T2 Tunable White		
		40 40 W/m 4080 lm/m		TW 2700K	LO 30° x 60° Oval <sup>###</sup>			
				- 6000K	LA Asymmetric LD <sup>###</sup>			
					LW Double Asymmetric <sup>###</sup> Wall Grazing <sup>###</sup>			

# HAWKO Lighting reserve the right to change any data without notification

##Delivered Lumens based on an Opal, CRI>80, 4000K luminaire)

###Not IK Rated