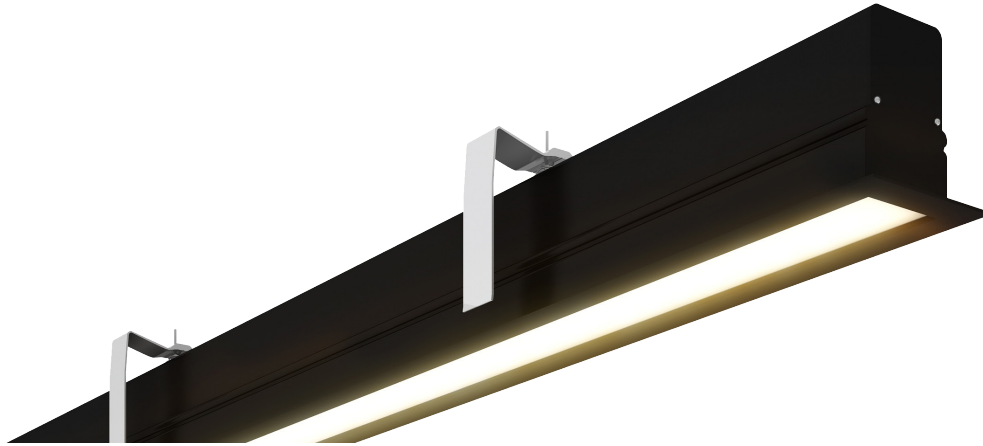


# 55 RECESSED - H5584R

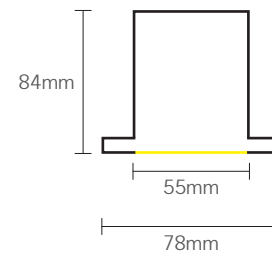


## Key Features

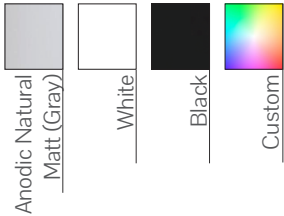
- Minimum length 600mm
- Maximum module length 4m
- 45°, 90°, T, X, Y bends available
- 2.9kg/m
- IP55 (On request)
- Custom colours available on request
- L80 B10 >100K Hours Lifetime

## Dimensions

Profile

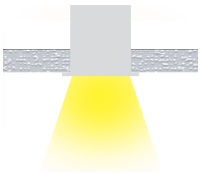


## Colour Options



## Mounting

Recessed (R)



## Code

Example: H5584R - R168030ODD011 - 2400

Code	Mounting	Power	CRI	CCT	Optics	Driver	Finish	Length
H5584R	R Recessed	16 16W/m 1347 lm/m	80 CRI>80	30 3000K	OD Opal	DO Non-Dim	10 Black	- XXXX
		19 19 W/m 1761 lm/m	90 CRI>90	40 4000K		DA DALI	11 White	
		26 26 W/m 2278 lm/m		50 5000K		PD Push-Dim	75 Gray	
		35 35 W/m 3004 lm/m		TW 2700K - 6500K		CA Casambi	CU Custom	
		40 40W/m				TW Tunable White		