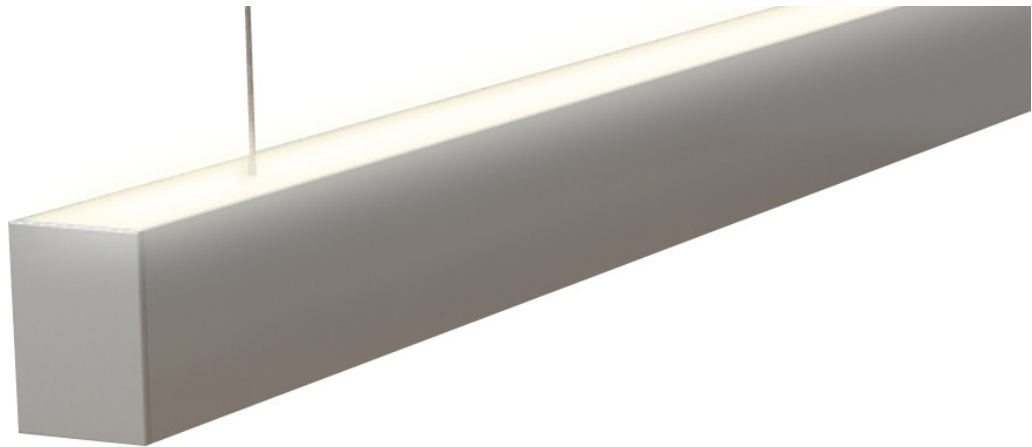
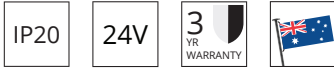


# 36 JOIST - HE3550

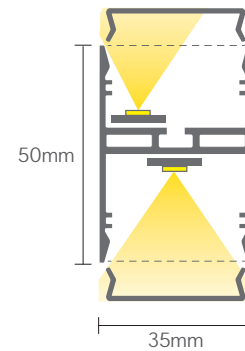


## Key Features

- Easy installation
- Max module lengths are 2.9m
- Butt joins to create longer lengths
- 2m adjustable wire suspensions when suspending the luminaire
- 45 & 90 bends available (custom bends available upon request)
- Aluminium screwless end caps

## Dimensions

Profile



## Colour Options



## Technical Information

ECO FLEX G2												
IP20/IP67												
CRI>80												
Heatsink required for installation												
4.8W/m (5)			9.6W/m (10)			14.4W/m (15)			19.2W/m (20)			
2700K	3000K	4000K	2700K	3000K	4000K	2700K	3000K	4000K	2700K	3000K	4000K	
500lm/m	520lm/m	575lm/m	1000lm/m	1050lm/m	1150lm/m	1530lm/m	1630lm/m	1730lm/m	2050lm/m	2150lm/m	2300lm/m	

#See individual LED Flex data sheet for full break down

## Code

Example: H3550 - P0590270DD079 - 2400

Code	Mounting		Power		CRI		CCT		Optics		Driver		Finish		Length
HE3550	P	Wire Pendant	5	4.8W/m	80	CRI>80	27	2700K	OD	LED+	DO	Non-Dim	79	Anodised	- XXXX
OR			10	9.6W/m			30	3000K			DA	DALI			
			15	14.4W/m			40	4000K			CA	Casambi			
HE3550IP			20	19.2W/m							PD	Phase Dim			

# HAWKO Lighting reserve the right to change any data without notification