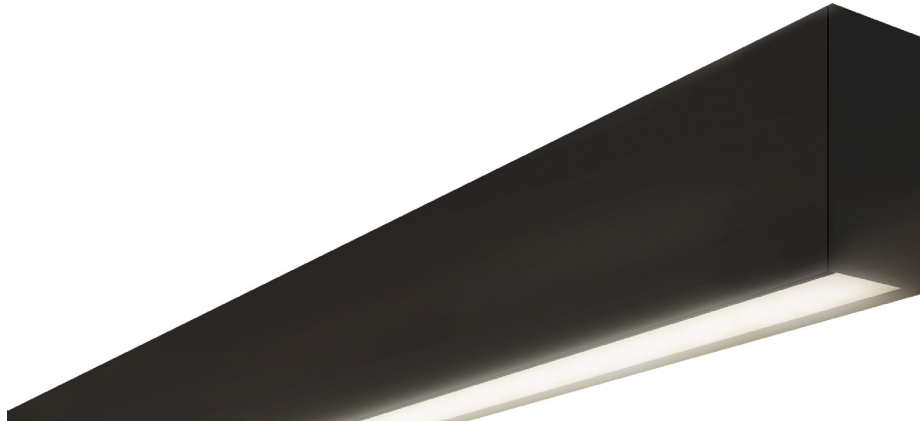


H55100

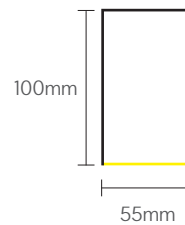


Key Features

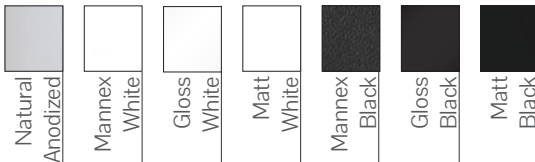
- Minimum length 600mm
- Maximum module length 4m
- 45°, 90°, T, X, Y bends available
- IP55 (On request)
- 3.8kg/m
- Custom colours available on request
- L80 B10 >100K Hours Lifetime
- Direct & Indirect illumination

Dimensions

Profile

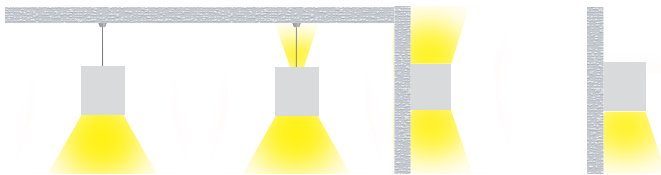


Colour Options



Mounting

- Wire Pendant (P) Up/Down Wire (U) Wall Up & Down Mounted (C) Wall Mounted (W)
Rod Pendant (D) Up/Down Rod (Y) Wall Mounted Adjustable (A)



Code

Example: H55100 - P168030ODD011 - 2400

Code	Mounting	Power	CRI	CCT	Optics	Driver	Finish	Length
H55100	P Wire Pendant	16 16W/m	2688 lm/m	80 CRI>80	30 3000K	OD Opal	79 Anodised	- XXXX
	D Rod Pendant	19 19 W/m	3306 lm/m	90 CRI>90	40 4000K		11 Mannex	
	U Up/Down Wire	26 26 W/m	4316 lm/m		50 5000K		White	
	Y Up/Down Rod	35 35 W/m	5530 lm/m		TW 2700K - 6500K		12 Gloss White	
	W Fixed Wall						13 Matt White	
	A Adjustable wall						10 Mannex Black	
	C Wall Up/Down						9 Gloss Black	
							8 Matt Black	
							CU Custom	

FOS Lighting reserve the right to change any data without notification

**Lumens are delivered lumens for both direct & indirect at the same time

**CRI 80 as standard