

60 EDGE - H6060E



*Cyanosis compliant on request

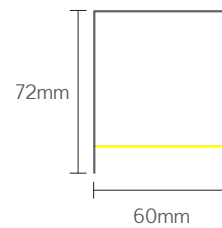


Key Features

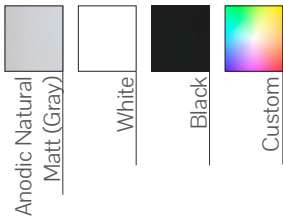
- Complies with relevant Australian Standards
- Even light distribution
- Screwless end caps (On Request)
- Provided shop drawings
- Welded joints (On Request)
- Plug and play
- Australian manufactured

Dimensions

Profile

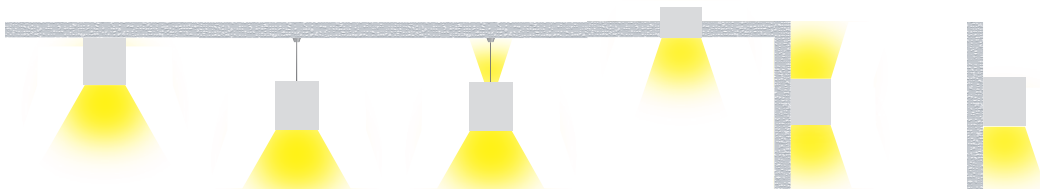


Colour Options



Mounting

Surface Mounted (S) Wire Pendant (P) Up/Down Wire (U) Recessed Trimless (T) Wall Up & Down Mounted (C) Wall Mounted (W)



Code

Example: H6060E - S128030ODDO10 - 2400

Code	Mounting	Power	CRI	CCT	Optics	Driver	Finish	Length								
H6060E	S	Surface Mounted	12	12 W/m	840lm/m	80	CRI>80	30	3000K	OD	Opal Micro Prismatic Clear	DO	Non-Dim	10	Black	- XXXX
	T	Trimless Recessed	16	16 W/m	1120lm/m	90	CRI>90	35	3500K			DA	DALI	11	White	
	W	Wall Mounted	20	20 W/m	1400lm/m			40	4000K	SW	Switch-Dim	75	Gray			
	C	Wall Up/Down	24	24 W/m	1680lm/m			50	5000K	CA	Casambi	CU	Custom			
	P/D	Pendant	28	28 W/m	1960lm/m			TW	2700K- 6500K	T2	Tunable White					
	U/Y	Pendant Up/Down	32	32 W/m	2240lm/m											
			36	36 W/m	2520lm/m											
			40	40 W/m	2800lm/m											

HAWKO Lighting reserve the right to change any data without notification **Luminous flux figures based on Opal, 4000K, CRI>90